



DROP DECK, 22.5 TON
22.5DP443946



PRD: 00443946 A.1



DROP DECK, 22.5 TON
2 AXLE, MAXIMUM PAYLOAD 45,000 LBS



HIGH QUALITY STEEL

NuStrength™
HIGH PERFORMANCE STEEL

NuStrength™ HR100

**HIGH
PERFORMANCE
STEEL**

ULTRA HIGH STRENGTH SHEET
100 KSI / 700 MPA SHEET STEEL COMPARISON

Melted and Manufactured in the USA

Constructed with T-1 100K PSI yield strength Steel. The High Tensile Steel ensures the designed camber is retained, and allows for a longer product service life.

STEMCO WHEEL WARRANTY



5 year wheel end warranty.
Guardian wheel seals, Pro-Torq spindle nuts and Sentinel hub caps.

COLOR OPTIONS



Globe Trailers can powder coat to the color of your choice

LIGHTING SYSTEM



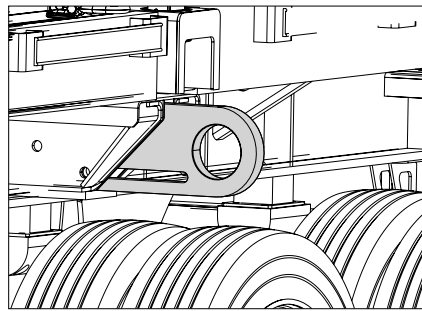
All Lighting is LED and mounted in rubber grommets to DOT standards.

LOCKABLE TOOL BOX



Optional Lockable Tool Box Mounted Underside of Main Deck, 24" x 24" x 48" Steel, can be located on either side.

LIFT RINGS



Two (2) lift rings on each side of deck for lifting aboard ships.

STAKE POCKETS



Stake pockets located along the deck.

WHEEL OPTIONS



All Globe trailers come with standard HUB piloted disc wheels. Wheels are also available in all Aluminum or Outer Aluminum.

LANDING GEAR



2 speed Landing Gear, allows for 160,000 lbs static load.

SUSPENSION



Heavy Duty tandem suspension.

DECKING OPTIONS



Oak: Standard.

Apitong: Best strength to weight ratios of natural woods.

Rumber: Composite which is impervious to fluids, mud, oil and UV rays.

SPARE TIRE



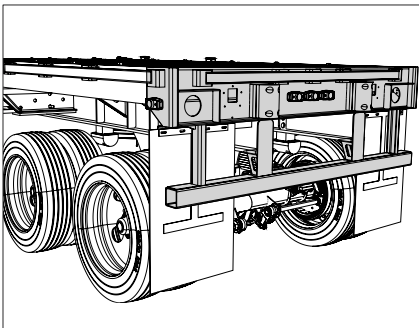
Spare tire and holder located on underside of trailer deck.

COLOR CODED HOSES



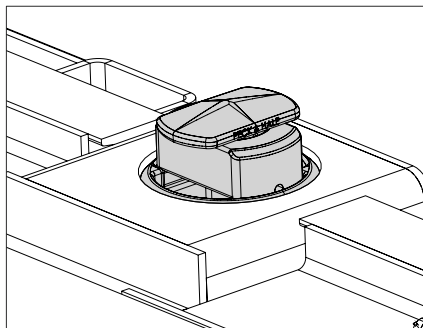
Color coded air hoses allow for easy trouble shooting and maintenance.

REAR BUMPER



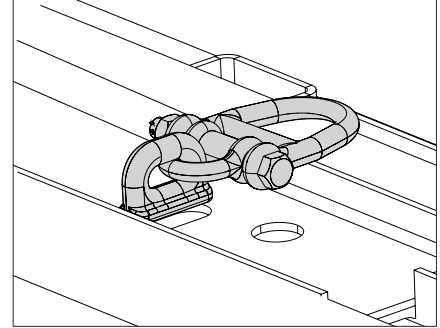
DOT certified rear under ride bumper with high visibility reflective tape and rubber docking bumpers.

CONTAINER LOCKS



Eight (8) ISO Container Locks located on deck, accommodating one (1) 20' ISO in (2) different locations.

D RINGS



"D" ring tie downs on upper and lower deck with a design load of 15,000 lbs.

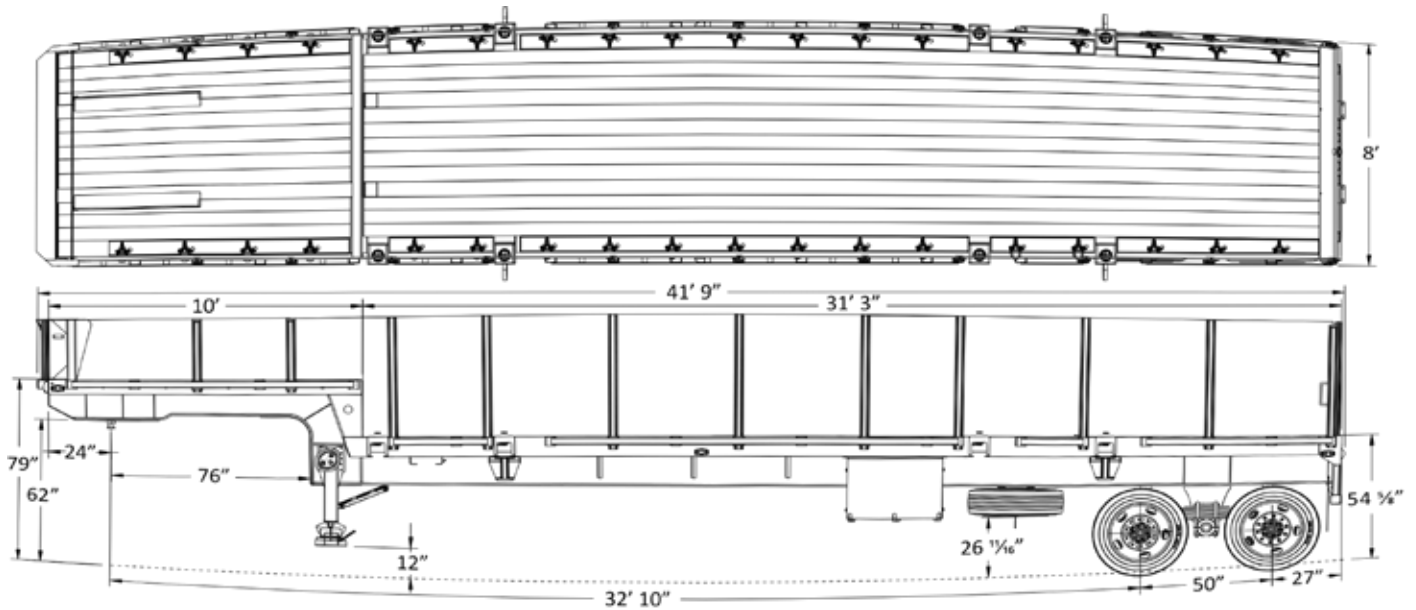
POLYURETHANE VS RUBBER BUSHING



Reduced Maintenance	Increased Maintenance
Increased Trailer Lifetime	Needs Replacement
Increased Trailer Performance	Reduces Trailer Performance
Weather Resistant	Damaged from Weather



All Globe Trailers are 100% powder coat finished. The entire process takes place at Globe's manufacturing facility. This eliminates the possibility of contamination occurring in transit between process phases. The process starts with sandblasting the trailer to near white, preheating the trailer steel in a dedicated, gas fired oven to optimum bonding temperature and applying an electrostatically charged zinc rich primer. The trailer then goes back in the oven to allow the primer to bond. After the primer has bonded, a top coat chosen from one of Globe Trailers' 188 color options is applied before once more going back in the oven to cure. The result is a durable, easily cleaned finish that protects the trailer from corrosion and ensures a long service life.



Trailer Model: GTFS22.5 2-43

Weight Apx. : 18900 ± lbs

Overall Length	Overall Width	Gooseneck Length	Swing Clearance	5th Wheel Height	Load Well Length	Front Deck Height	Rear Deck Height
41' 9"	8'	10'	76"	62"	31' 3"	79"	54 1/8"

Main Deck	
Main Beam	100 KSI flanges and webs.
Centers	42"
Side Rails	Structural Channel Side Rails
Crossmembers	Jr. I-Beams on, evenly spaced Centers.
Tie-Downs	36 "D" ring tie downs on upper and lower deck
D-Rings	18 Per Side
Stake Pockets	Front & Sides
Container locks	8 ISO container locks located on deck, accommodating one (1) 20' ISO in two (2) different locations.
Neck	Full Width, Steel Covered
Decking/Flooring	
Main Decking	1 3/8" (apitong flooring)
Side board kit	25" Front header provided 10" wrap around, side rack panel kit provided, tarp kit provided with bows & securing/fastening items (ropes & straps)
Electrical	
Lights	LED Plus 2 - Rear Strobes
Connector	7 Way Connector
Options	
Lockable Tool Box, Spare Tier & Carrier	
Manifest Box	
Tires & Rims	
Tires	255/70R x 22.5 "H"
Rims	8.25 x 22.5 Hub Piloted Steel

Axles, Suspension, & Running Gear	
# of Axles	2
Axle Spacing	50"
Axle Capacity	25,000lbs
Brakes	16 1/2" x 7" - 25K
ABS	2S1M
Axle 1	Fixed Type 30/30 ABS
Axle 2	Fixed Type 30/30 NON ABS
Spring Ride Suspension. (Single Point Suspension)	
2-Speed Landing Gear.	
Gooseneck	
King Pin Style	Fixed
King Pin Setting	24"
Swing Clearance	76"
5th Wheel Height	62"
King Pin	2" Heavy Duty
Finish	
Sandblast & Powder Coat	
Mud Flaps & Reflective Tape	
Flag Holders	

Dealer: